



# 2012 Belgard Product Guide



*Creation Begins With The Elements.™*





# Elements

*“Elements are pre-built modular units that are manufactured with Belgard product by Harmony Outdoor Living, Inc. They are designed to flow seamlessly with the surrounding hardscape. Each module comes with fork slots that allow them to be installed with skid steers, forklifts, or even cranes.*

*Please note the following when placing an order:*

- ***Please list the product ID/SKU***
- ***Choose a standard color scheme (or contact us for a 3D image of a custom color combination)***
- ***“Custom colors & accents” are available - call for information***
- ***Make sure to check the weights and plan to have the appropriate machine available***
- ***List any additional features/ upgrades, for example : lighting, accent changes, accessories, etc.***







## *The Nottingham Collection*

**The following Elements  
are special order items and  
may have an increased  
lead time. Please contact  
your rep for info.**





# Nottingham Fireplace



- Product ID—NTFRPW (36" wood)
- Product ID—NTFRPBOG (gas burning, without chimney)
- Product ID—NTFRPBG (gas burning, with chimney/top)
- Product ID—NTFRPBOL (LP burning, without chimney/top)
- Product ID—NTFRPBL (LP burning, with chimney/top)

Approximate weight :  
Call for details.

Rough dimensions :  
3.17' D x 6' W x 10' H

# Nottingham Wood Box Set



Approximate weight :  
Call for details.

Rough dimensions :  
2.8' D x 3.75' W x 3.1' H

Product ID—NTWDBX

# Nottingham Water Feature Set (12")



Approximate weight :  
Call for details.

Rough dimensions :  
4' D x 2.3' W x 3.5' H

Product ID—NTWFPR

# Nottingham Arched Hearth



Approximate weight :  
Call for details.

Rough dimensions :  
2.3' D x 6' W x .9' H

Product ID—NTHTA

# Nottingham 24" Water Feature



Approximate weight :  
Call for details.

Rough dimensions :  
3.7' D x 4.5' W x 4' H

Product ID—NTWATFT

# Nottingham Brick Oven



Approximate weight :  
Call for details.

Rough dimensions :  
4' D x 4.7' W x 7.75' H

Product ID—NTBRO

**\* The above Elements are special order items and may have an increased lead time. Please contact your rep for info.**



## Low Voltage Lighting Upgrades



— RotondoLuna

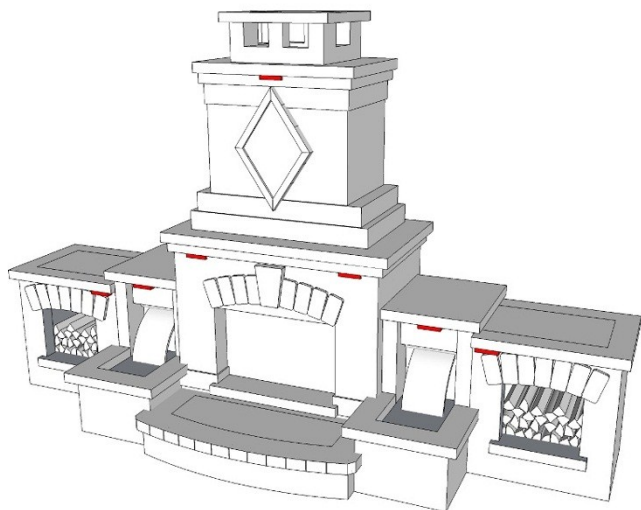


— BelloPerimetro

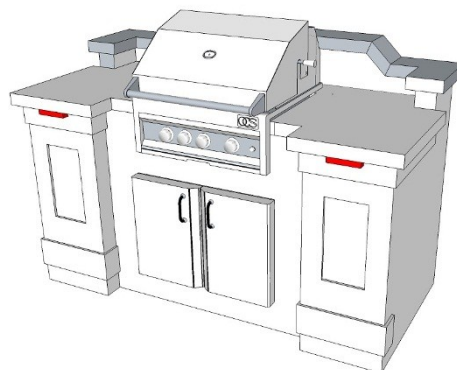
“Low Voltage Lighting fixtures from FX are available as upgrades. Please contact us directly for specific colors. We offer the following models : BelloPerimetro (lip light) and RotondoLuna (for brick ovens). Below are lighting diagrams of possible lighting locations. Be sure to specify which model, color, and location you prefer. Note, each light comes with enough wire to protrude from the back of the Element. They DO NOT include any connectors or transformers.”



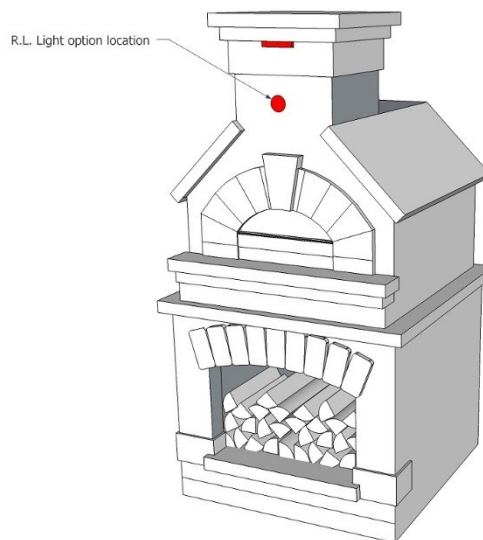
### Fireplace Units



### Grill Island



### Brick Oven







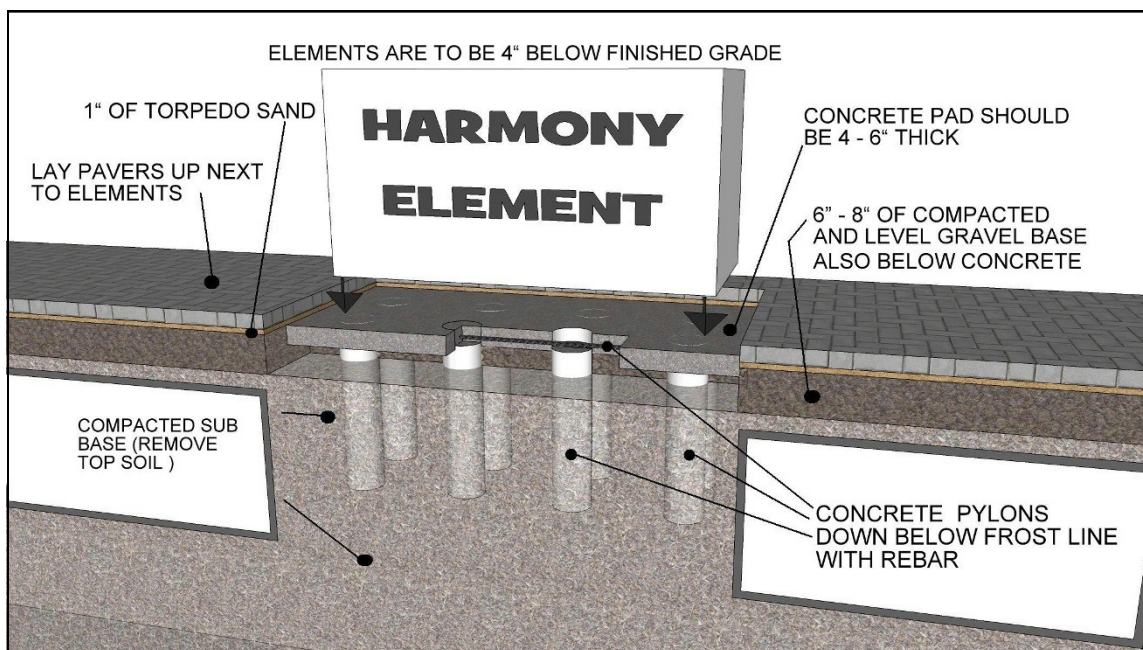
## Installation Instructions



### Installation

*“Elements are very easy to install. Here are a couple cross section details to consider. Keep in mind, these ARE NOT engineered plans. Make sure you check with your local municipality for their requirements when installing Elements. Here are a few other key points to remember:*

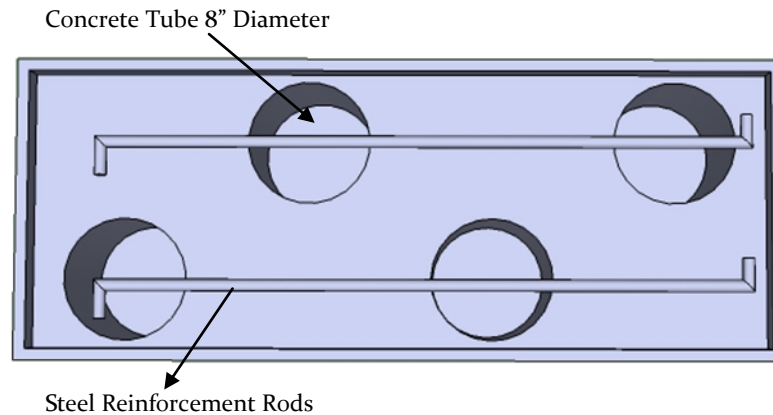
- *Always place a piece of material (plywood or carpet work well) between your forks and the Element to prevent chipping*
- *Always transport the Element on the pallet it comes with until you are ready to place on the permanent location*
- *Make sure to use a ratchet strap to secure the Element to the loader when placing*
- *Handle Elements with care – they are concrete but not indestructible*
- *Make sure to size the machine to the Elements weight*
- *All Elements are designed to be buried 4” below finish grade (note – bars need to be buried 8” below finish grade)*



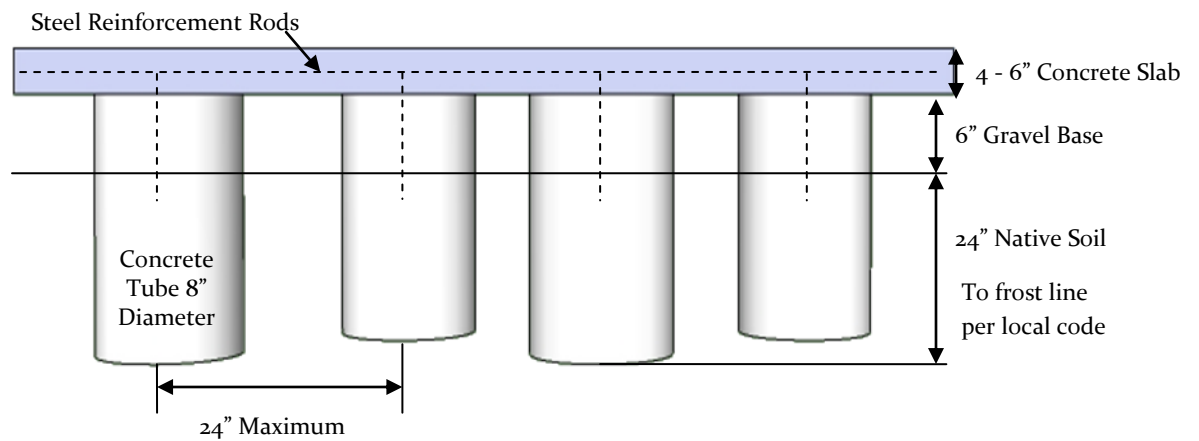
## Typical Cross Section for Concrete Pad Installation

**\*\* The following measurements are a suggestion. Always check your local building codes before installing.**

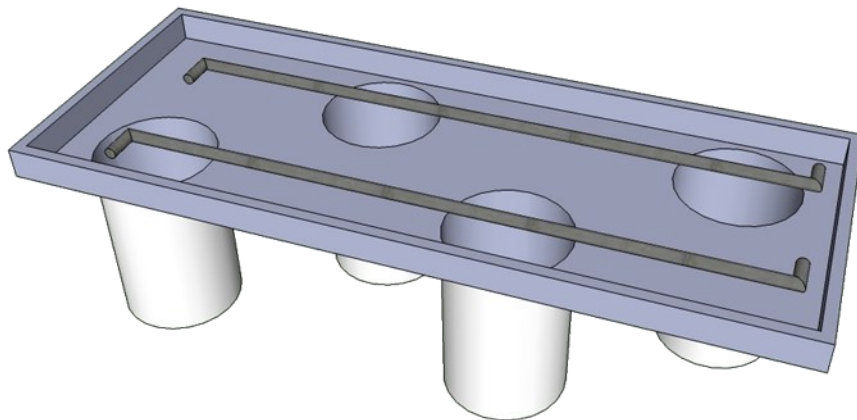
**Top View**



**Side View**



**3D View**



# Trailer Layout Guide

## Load 1

lbs

1	3	5	7	9	11	13	15
2	4	6	8	10	12	14	16

## Load 2

lbs

Brick Oven Base	Brick Oven Top	12" Pair Water Feature	24" Water Feature	Fire Pit	Fire Table	1	3
					Hearth	2	4

### Load 1

Load 1 shows a layout for the number of Elements that can be loaded on a typical 48 ft trailer. We start with 16 and break it down by weight from there. Because of weight we can only get 7 Bristol or Wexford fireplaces on a full load which means we will use 14 slots. For the Brighton fireplace we can use all 16 so we get 8 fireplaces on.

\* Make sure the truck can haul 48,000lbs when taking 7 fireplaces.

### Load 2

Load 2 shows the items that will take up 2 slots because of there size. It also shows how we sometimes will stack the hearths on a load.

The best thing to do is follow this guide and then we will make a minor adjustment on a piece or two once we receive the order. Any questions please let us know.





Creation Begins With The Elements. <sup>TM</sup>



**HARMONY**  
OUTDOOR LIVING INC.

Harmony Outdoor Living, Inc.

701 Blackhawk Dr. - Unit F

Burlington, WI 53105

[www.HarmonyOutdoorLiving.com](http://www.HarmonyOutdoorLiving.com)